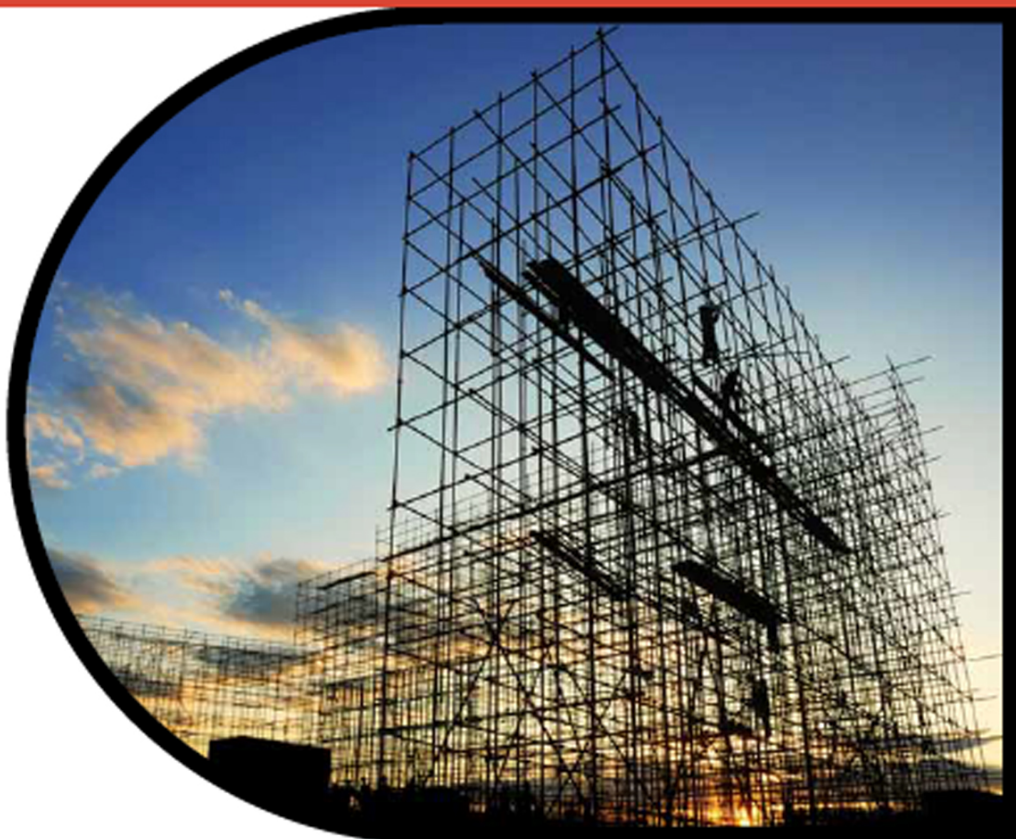




شركة النجم الثاقب  
AL-NAJM AL-THAQIB CO.

Scaffolding & Formworks Services



The Ultimate Solutions for Scaffolding & Formworks

[www.ntescaffolding.com](http://www.ntescaffolding.com)

(NTE Sabic Vendor Code : 506570)  
(NTE Aramco Vendor Code : 1006928)



## About Us

Al Najm Al Thaqib Est. (NTE) was established to serve the needs of scaffolding and formworks with high quality materials and related products required for construction industry.

Since our inception in 1992 we have continuously strived to maintain the highest possible quality of products and services. This is the principle on which we have built our reputation as a key supplier to the major construction and engineering companies in Saudi Arabia and Middle East.

The team at NTE is selected both for their professional qualifications and their technical experience in the field of scaffolding materials. This experience will allow our team to provide you with quality material and excellent service that will exceed your expectations.

NTE places great emphasis on product quality and operate a rigorous quality assurance policy. This uncompromising approach is the guarantee of maximum strength and durability for the products from Al Najm Al Thaqib Est. (NTE).

We look forward to demonstrating our quality products and quality services to you in the near future.

## Our Services

- ➡ Sales of tube & fittings and system scaffolding
- ➡ Sales of Formwork and accessories
- ➡ Design and Engineering services
- ➡ Manufacturing of system scaffolding (cup lock) and its accessories
- ➡ Rental services for all kinds of scaffolding & Formwork materials
- ➡ Contracting services for installation of Formwork and scaffolding requirements



## NTE Scaffolding Tubes

NTE supplies galvanized scaffolding tubes confirming to BS 1139/EN 10219 in compliance with latest ARAMCO GI 8.001



PROPERTIES	BS 1139 SI	EPS	EN 10219 SI	FPS
Wall thickness	4mm	0.158 inch	3.2 mm	0.125 inch
Nominal O.D	48.3 mm	1.901 inch	48.3 mm	1.901 inch
Sectional Area	557 mm <sup>2</sup>	0.862 inch <sup>2</sup>	453 mm <sup>2</sup>	0.702 inch <sup>2</sup>
Moment of Inertia	0.1376 x 10 <sup>6</sup> mm <sup>4</sup>	0.33 inch <sup>4</sup>	0.115 x 10 <sup>6</sup> mm <sup>4</sup>	0.28 inch <sup>4</sup>
Section modulus	5700 mm <sup>3</sup>	0.35 inch <sup>3</sup>	4797 mm <sup>3</sup>	0.29 inch <sup>3</sup>
Radius of gyration	15.7 mm	0.62 inch	16.0mm	0.63 inch
Minimum Yield Stress	235 N/mm <sup>2</sup>	34 ksi	320 N/mm <sup>2</sup>	46 ksi



GI Scaffolding Tube 48.3mm OD x 4.0 mm BS 1139 or EN 39

GI Scaffolding Tube 48.3mm OD x 3.2 mm EN 10219

Scaffolding Black Tube 48.3 mm OD x 3.0 mm

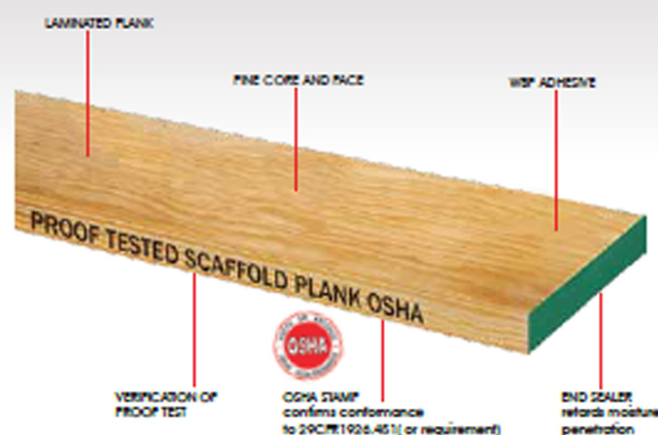


# NTE Scaffolding Planks

## LVL OSHA BOARDS

NTE supplies Scaffold Boards in accordance with BS 5973 or equivalent AS/NZS 4357/EN 14374:1995 and ANSI A10.8-2001.

Each Scaffold Board is individually proof tested, laminated and embossed with PROOF TESTED SCAFFOLD PLANK and OSHA to comply with latest Aramco GI 8.001.



## SCAFFOLD WOODEN BOARDS BS 2482.

Fully conforms to BS 2482

Banded with galvanised board bands at both ends

Support at every 1.2mtrs

Kiln dried and have less than 16% moisture Content

Dimensions 38mm x 225mm x 3.9 mtrs



## STEEL BOARDS

Available in painted finishes

Weight - 6.0kgs/mtr

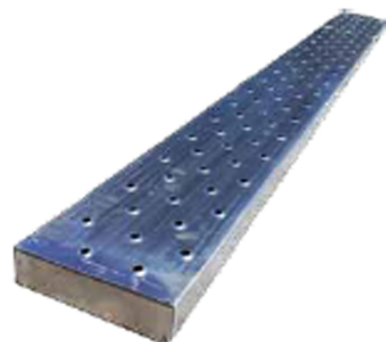
Manufactured from 2.0mmthk steel plate

a) Hook type or inter locking system

b) Block end type



Hook Type



Block End Type



# NTE Scaffolding Fittings

## DOUBLE COUPLER D/F

Weight - 9.6 kgs  
Maximum Slip Load - 15.0kN  
Maximum Distortion Load - 30.0kN  
Finish - Zinc Plated, Gold Passivated or Powder Coated  
Maximum Displacement 7.0mm  
Fully conforms to Standard BS 1139 or EN74  
Class B



Double coupler  
D/F (BS 1139/EN 74)

## PUT LOG OR SINGLE COUPLER

Weight - 0.63 kgs  
Maximum Slip Load - 1.20kN  
Finish - Zinc Plated or Powder Coated  
Fully conforms to BS 1139 part 2 - 1982



Putlog Single Coupler  
D/F (BS 1139/EN 74)

## SWIVEL COUPLER D/F

Weight - 1.1 kgs  
Maximum Slip Load - 8.5kN  
Maximum Distortion Load - 17.0kN  
Finish - Zinc Plated, Gold Passivated or Powder Coated  
Maximum Displacement 7.0mm  
Fully conforms to European Standard EN74  
Class A



Swivel Coupler D/F  
(BS 1139/EN 74)

## GIRDER COUPLER D/F

Weight - 1.50kgs  
Slip of Coupler Along Section Load - 10.0kN  
Slip of Tube Through Coupler - 6.5kN  
Finish - Zinc Plated or Powder Coated  
Hanging Load Vertically - 30kN  
Always Use In Pairs



Girder coupler (Beam clamp)  
D/F (AS 1576)

### SLEEVE COUPLER PRESSED

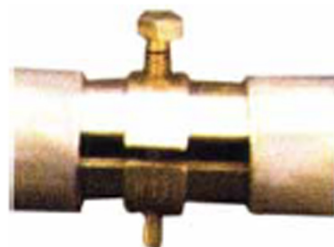
Weight - 1 kgs  
Maximum Slip Load - 6.0kN  
Maximum Bending Load - 19.0kN  
Finish - Plated, Gold Passivated or Powder Coated  
Maximum Displacement 2.0mm  
Conforms to European Standard EN74  
Class B



Pressed Sleeve coupler (EN 74)

### JOINT PIN PRESSED

Weight - 0.84kgs  
Maximum Slip Load - 6.0kN  
Maximum Bending Load - 19.0kN  
Finish - Plated, Gold Passivated or Powder Coated



Pressed Joint pin (EN 74)

### TOE BOARD CLAMP

Weight - 0.32kgs  
Finish - Gold Passivated or Powder Coated



Toe Board Clamp (EN 74)

### BOARD RETAINING CLAMP

The board retaining clamp is used with scaffolding in order to secure scaffolding boards. Board retaining clamps ensures that scaffolding boards are carefully and safely locked in to the correct position for a safe work environment.

- Conforms to BS EN 1139 : Section 2.2. 1991
- Silver or gold zinc plated finish
- Used for securing scaffold boards
- Boards are quickly locked in the correct position



Board Retaining Clamp (EN 74)

### LADDER CLAMP PRESSED

This is a unique safety product that enables a ladder to be firmly fastened by the stiles to horizontal scaffold tubes or posts. Used in pairs



Ladder Clamp pressed

### UNIVERSAL CLAMP

Performs a similar function to the wedge clamps but recommended where forms are to be handled repeatedly or are likely to be subject to considerable vibration.



Universal Clamp

## NTE Ladders

### STEEL LADDERS

NTE Steel Ladders are of modular design with circular rungs. NTE Steel Ladders are available in 3, 4 & 6 mtr length as standard, non-standard lengths are available on request. Both ladders are fitted with hooks for easy fixing. Steel Ladders have additional features, such as anti slip grooved rungs, anti slip rubber end caps and are light in weight too.





# NTE Aluminum Ladders

## EXTENSION LADDERS

Rope-operated two-piece ladder with comfortable rungs. Level adjustable by Nylon or PVC rope. Spring-loaded lock hooks to lock level in desired place Nylon groove pulley for smooth sliding rope. Non-slip heavy duty swell rubber foot riveted to the base of the rails. Special design rubber caps are fixed at the top ends, to provide firm grip against leaning surface

Product code	No of steps	Height	Extn Ladders Length
NTE AL E	10	3.0	5.28
NTE AL E	12	3.6	6.88
NTE AL E	14	4.2	7.72
NTE AL E	20	6.0	11.26



Extension Ladders

## SINGLE STRAIGHT ALUMINIUM LADDER

Wide-profile "D"-Shape safety steps for added strength and comfortable foothold. Special design rubber caps are fixed at the top ends, to provide firm grip against leaning surface. Non-slip heavy duty swell rubber foot riveted to the base of rails.

Product code	No of steps	Height (mtr)
NTE AL S	8	2.4
NTE AL S	11	3.0
NTE AL S	16	4.2
NTE AL S	18	4.8
NTE AL S	23	6.0



Single Ladder (Straight)

## A TYPE LADDER ( MULTI PURPOSE LADDER)

Aluminium rectangular "U"-section Frame and steps. Double legged; to be used as double standing ladder or leaning ladder, lock, hinges and Non-slip shoes provide for added safety. Protective plastic side caps on top and Back rails. Multi-Riveted wide profiled steps for safe climbing and comfortable foothold. Non-slip shoes are designed to withstand hot and humid weather conditions. Three-piece spreader with special design locks for comfortable ladder spreading. Support braces added strength to steps. Application: Construction and Industries. Load Capacity: 125 Kgs (Including user and Materials)



Multi purpose Ladder

## NTE Ladder Beams

### STEEL LADDER BEAMS

Ladder beams make for a clear span between scaffolds. They are constructed from high tensile steel and the saddles are welded at each joint for better security. You can get a painted or galvanized finish and available in different lengths and weights:



## NTE Cup Lock Systems

### Cuplok Benefits

- Strong - 40 kN per leg
- Savings in erection times, fast to assemble
- Simple to erect
- Systemized bracing reduces labour costs
- Full design support with C.A.D.
- Components up to 20% lighter than traditional counterparts.
- Versatile for support and access
- Confidence from in-depth technical support.

### Unique Method of Connection

The principal feature of NTE Cuplock is the unique method of connecting ledgers and transoms to the standards in one single action without the use of nuts, bolts or wedges.

The locking device is formed by two cups, a fixed lower cup which is welded to the standard at 0.5m intervals and a sliding upper cup. The forged blade ends of ledgers and transoms are located in the lower cup. The upper cup is moved down and rotated by hammer blows to give a positive and rigid connection.

It is this revolutionary node point locking principle which helps to make NTE Cuplock faster to erect than other scaffold systems.

Since ledgers are located in node points on one level, setting out is easy and complete erection simplicity itself.



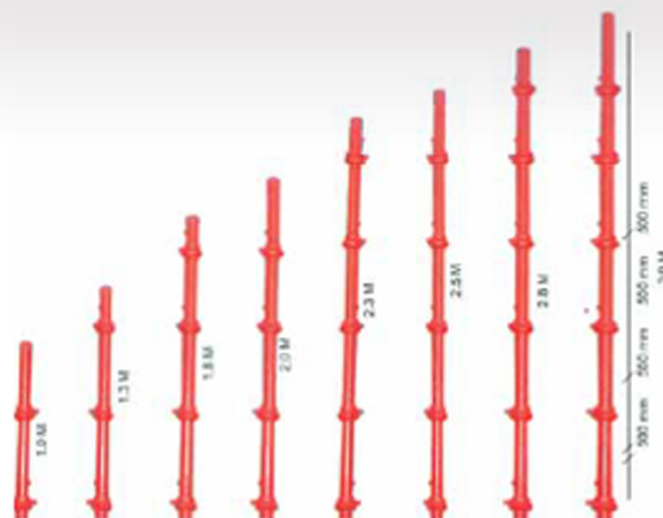
### Confidence - C.A.D. Support

Our experience of using Cuplock in virtually every type of project in K.S.A and around the globe, enables us to offer you absolute confidence when using the system. Our extensive technical and design support includes an advanced Computer Aided Design facility. With Cuplock we provide simply the best technical support available.

## CUPLOCK STANDARDS

Standards (Vertical posts) have top and bottom cups at every 500mm. They can be manufactured from 1.0mtr to 3.0mtr in length.

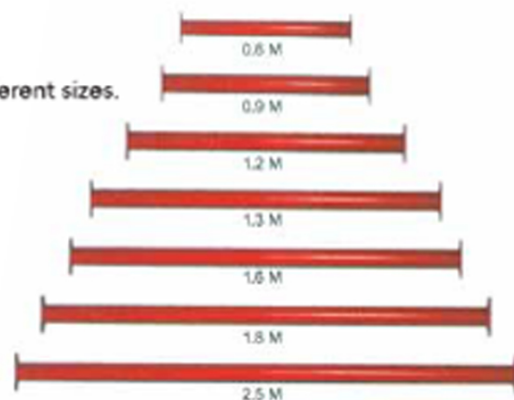
STANDARDS / VERTICAL	
SUPPORT	
STANDARDS	
(OPEN ENDED)	
SIZE	WEIGHT(KG)
3.0m	13.70
2.5m	11.40
2.3m	11.10
2.0m	9.25
1.8m	8.55
1.5m	6.85
1.3m	6.35
1.0m	4.55



## CUPLOCK LEDGERS

Each ledgers are provided with forged blade ends to enable positive locking and are available in range of different sizes.

LEDGERS	
SIZE (m)	WEIGHT (Kg)
2.50m	9.0
1.80m	6.40
1.60m	5.65
1.30m	4.70
1.20m	4.25
0.90m	3.20
0.60m	2.35



## INTER MEDIATE TRANSOMS

Intermediate Transoms provides board or bottom support where ever there is no ordinary transom present, i.e. between the standards

TRANSOMS	
SIZE (m)	WEIGHT (Kg)
1.8m	7.60
1.6m	6.70
1.3m	5.50
1.2m	5.20
0.795	3.70





# NTE Scaffolding Accessories

## ADJUSTABLE FORK HEAD

The adjustable forkhead can be connected at the top of the standard and has a U Head on top to support primary and secondary aluminium beams or decking beams for formworks.

Maximum Length – 760mm  
Safe Working Load – 40 KN



Adjustable Fork Head

## FIXED FORK HEAD

The Forkhead can fit on to any jack to support aluminum beams or timber beams. This component accepts loaded primary bearer in all light or heavily loaded shoring applications. Typical Bearer could include traditional timbers bearer, Aluminium form work bearer or standard universal steel sections.



Fixed Fork Head

## BASE PLATE

The 25mm base plate is inserted at the base of the standard and has 6.0mm thick steel plate that bears the load of the scaffolding. It can be used for erecting scaffold towers for any commercial and construction projects. Premium quality in the fit and finish of each piece and extreme durability as each, high quality steel, precisely welded and in powder coated or paint finish.



Spigot Base Plate

### SOCKET BASE PLATE

It is used in conjunction with universal jack at either the top or bottom of the structure.

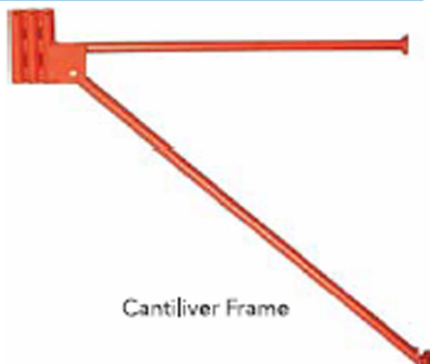
Premium quality in the fit and finish of each piece and extreme durability as each. High quality steel, Precisely welded and in powder coated or paint finish.



Socket Base Plate

### CANTILIVER FRAME

Cantilever Frames are used for providing support to decking or formwork at edges. The frame has ledger blades connected so it can be fitted into cups of the standards. The frame can also accept jacks in three positions at the other end at 1.2mtr, 1.25mtr and 1.3mtr from centerline of the standard. Cantilever frames are designed with blade ends that easily located in the cup joint and accept jacks in three locations.



Cantilever Frame

### SPIGOT CONNECTOR

Spigots are used on the top of a standard to create an end to end connection with another standard. The spigots can be welded or be supplied loose with the nuts and the bolts, so they can be connected onto the top of the standard.



Spigot connector

### BEAM BRACKET

Beam Brackets are used to support the drop beams encougered within the regular slab support grid. This eliminates the need for the beam bottoms to be propped up from the ground. The Beam Brackets are capable of receiving adjustable jacks and standards for reaching the beam bottom level. It has a safe load carrying capacity of 20KN.



Beam Bracket

## UNIVERSAL JACK

The Universal Jack can be connected at either end of the standard and is used with the socket base or forkhead. The threaded tube makes height adjustments easy. It provides an adjustment option at either the top or the lowest end of a scaffold support structure.

Jack Size: 660 mm x 38 mm x 4mm



Universal Jack

## ADJUSTABLE BASE JACK

The adjustable base jack can be used as an alternative to the universal jack and socket base. It fits underneath the standard and can be adjusted to accommodate different surface levels. The base jack can be plated or painted to finish.

Base Plate : 150 mm x 150 mm x 6mm

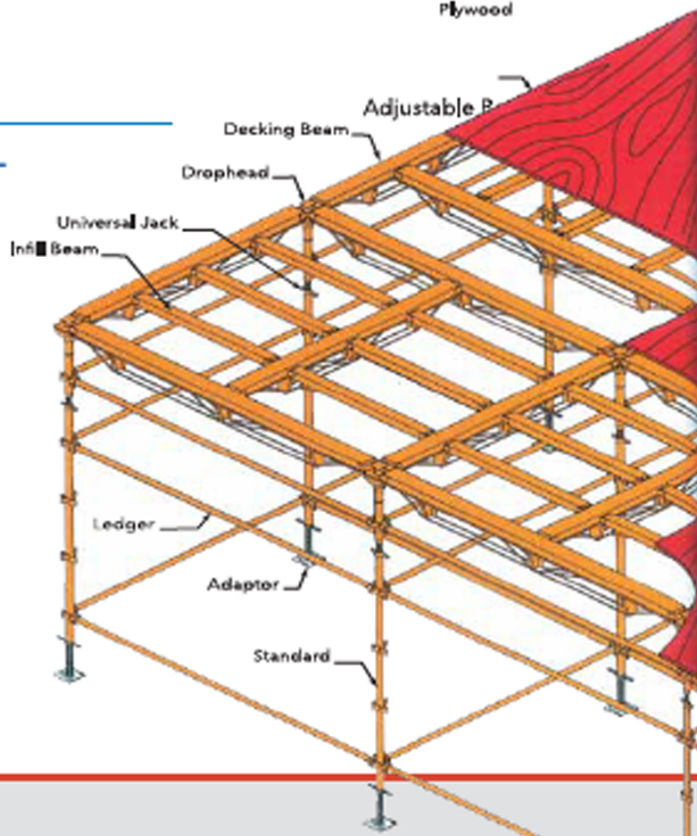
Jack Size: 660 mm x 38 mm x 4mm

Safe Working Load ; 40 KN



Plywood

## STEEL DECKING LAYOUT





## SCAFFOLDING TAG & HOLDER

Scaffolding tag is an easily identifiable erection and inspection record of a particular scaffold includes SABIC & ARAMCO standard tag & holder also.



## SCAFFOLD TOOL BELT

A range of fastening & safety tools available to suit most common



## SCAFFOLDING SPANNERS

Swing ove scaffold spanner is very light very strong with hex head.



## GIN WHEEL

This is a cost effective yet safe hoisting system, comprising a self-lubricating pivot wheel for use with a 16mm fall rope. This is secured to a drop forged eye bolt that fits over a scaffolding tube.

Weight of 5.0kgs, a 250mm wheel conforming to BS 1692 and has a safe working load of 250kgs



## SPIGOT CASTOR WHEEL

Heavy duty wheel exclusively used with twist lock, cuplock system.

This can carry a static load of 800 kg.



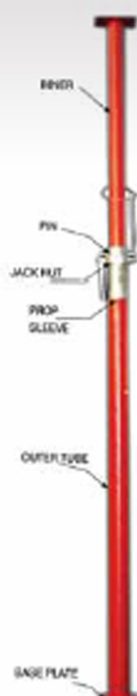
## SOCKET CASTOR WHEEL

The heavy duty scaffold wheel used with tube, coupler system, Kwick stage scaffolding and other similar systems. Steel wheel types also available.



# NTE Props / Shoring Props

## VERTICAL PROPS PAINTED (LD, MD, & HD)



Light Duty - 2.0 mm Inner & 2.0 mm Outer Tube

Size M	Minimum Telescopic Extension		Weight (Medium Duty)	Weight (Max. Duty)
3.0	1.75	to 3.0	9.800	15.000
3.5	2.0	to 3.5	10.000	16.800
4.0	2.5	to 4.0	11.800	18.600
4.5	3.0	to 4.5	13.000	20.000



Flange Plate



Prop Pin



Prop Nut



Prop Pin (Korean)

NTE Props designed in keeping with British Standards, these adjustable props/struts are of high grade steel. They are ideal for any type of construction requiring adjustable load-bearing. Rough height adjustment is made possible by way of a heavy duty steel pin inserted into a slot in the outer tubular steel body through one of the best suited holes (in terms of offering the approx. height extension) in the inner heavy duty tube. Precision adjustment of height is affected by a lever attached to a cast iron collar located just below the pin.



↓  
10 mm  
↑

## PUSH PULL PROPS PAINTED (LD, MD, & HD)

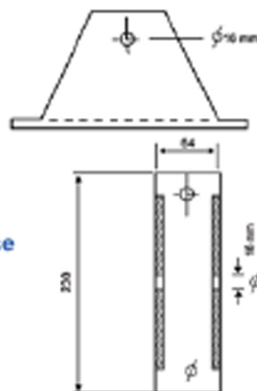
### Versatile Light Weight Time-saving

Push-Pull Props are designed for use wherever an adjustable inclined struts in required. The push-prop is generally used in the construction/erection of pre-cast units and for plumbing of column and wall formwork. However they are also suitable for other industrial applications.

Available in a wide range of sizes.



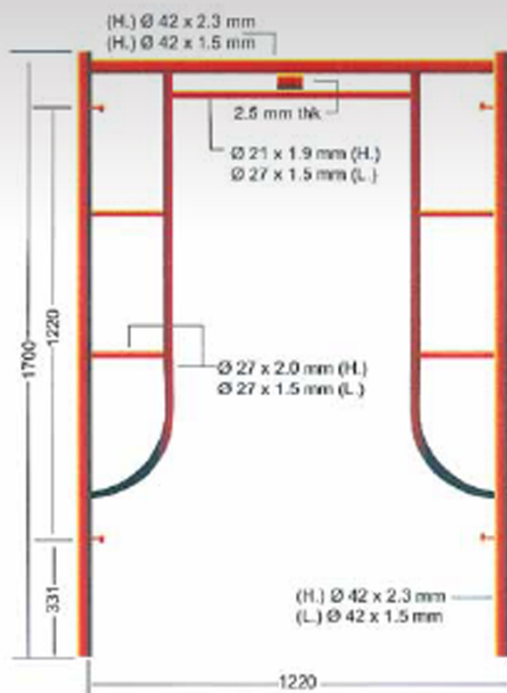
Props Rocking Base



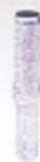
Model Code	LD/2 mm CSF 1164	MD/3 mm CSF 1165	HD/3.6/4 mm CSF 1166
Minimum Working Range (m)	2.59	2.59	3.20
Maximum Working Range (m)	3.90	3.90	4.88
Working (Adjustable) Range (m)	1.30	1.30	1.68
Weight (kg) approx.	12	18	30

# NTE Access Scaffold Frames

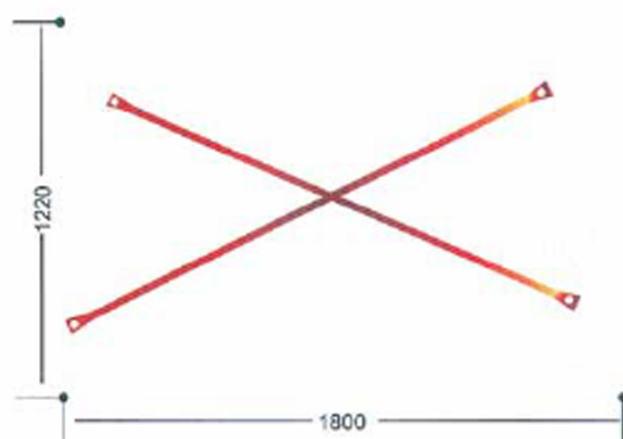
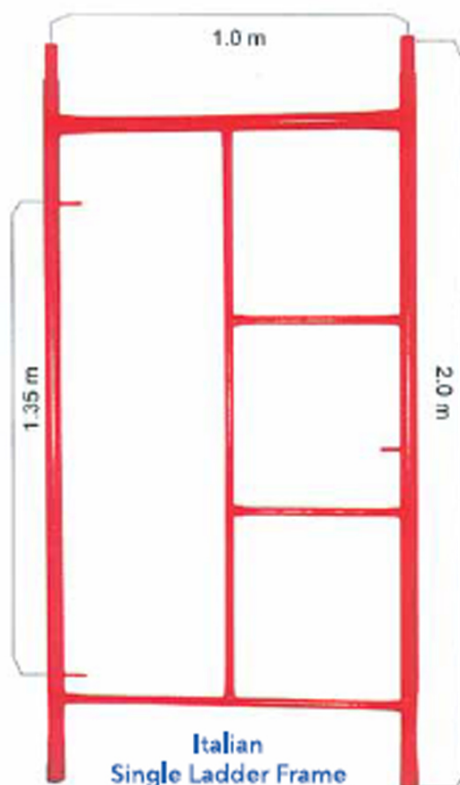
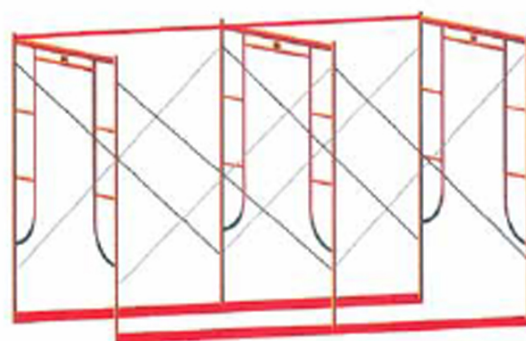
## DOUBLE LADDER FRAME / KOREAN FRAME



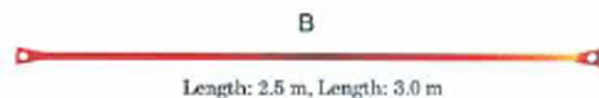
A. Brace Lock



B. Connecting Pin



Cross Brace Length: 2.7 m, Length: 3.2 m





# NTE Formwork Ancillary Equipments & Accessories

**Soldiers:** NTE has an astute understanding of onsite requirements of factors that allow scope for improvement and build increasingly efficient systems. The NTE Soldier System is one such resultant product that offers immense economies in cost of time, labour and other resources.

## Outstanding Features:

The NTE Soldier is an ideal balance of weight, stiffness, strength and durability with diamond apertures and stiffening ribs.

## Scope of usage:

- Keeps deflection in concrete finish to negligible levels despite high concrete pressure.
- Allows soldiers spacing and tie loads to be optimized when used in conjunction with the added strength of walings. Adapts to non-formwork applications thereby reducing dependence on specified equipment.

## Product Range:

Available in eight lengths (0.45 m, 0.675m, 0.9m, 1.125m, 1.8m, 2.7m, 3.15m & 3.6m) with a variety of associated accessories.



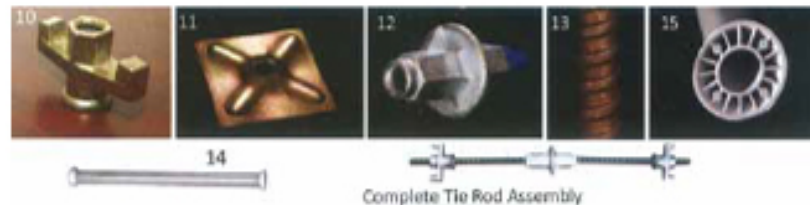
## NTE SOLDIER ACCESSORIES

1. Timber Walling Clamp & J Bolt
2. Wedge Clamp
3. Lifting Bracket
4. Support Plate
5. End Tie Washer
6. Form Jack
7. Hop-up Bracket



## NTE FORM TIE SYSTEM

10. Wing Nut
11. Whaler Plate
12. Water Stopper
13. Tie Rod Bar
14. Plastic Sleeve
15. Plastic Cones



## NTE SHORING COMPONENTS

1. Swivel Shoring Base
2. Tubular Shoring Adaptor
3. Soldier Bracing Coupler
4. Threaded Shoring Adaptor
5. Heavy Duty push pull prop Adaptor
6. Beam Shoe



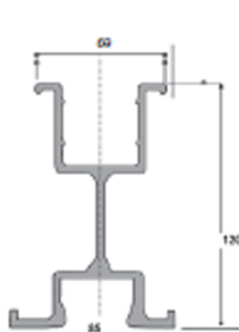
# NTE Aluminium Beams

## INTRODUCTION

The NTE Aluminium Beam is the product of our careful research and development. It is indeed a most versatile shoring member covering the vast majority of building applications. The four beams currently available are designed to perform specific jobs for the most economical solutions. Other systems, where only a single section is available, could result in compromises being made with regard to design that adversely effect labour and material costs and reduce profits in an ever competitive market place.

NTE Aluminium Beams are ideal for use as primary and secondary members on soft formwork and equally suitable as Wallings on Wall Formwork in conjunction with NTE Robust Steel Soldier System.

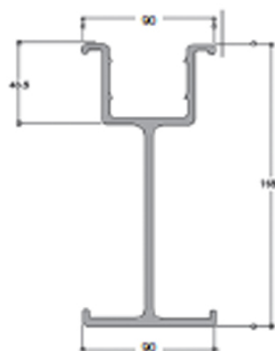
Provision is made at the top for a solid timber insert to allow plywood to be fixed easily and ensures tighter joints for greater safety, Speed on accuracy on site.



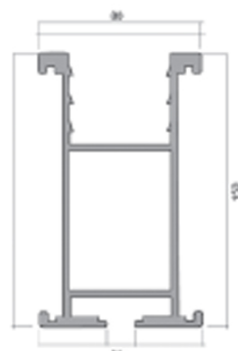
Secondary Aluminium  
Beam (S120) Light Duty  
(Weight : 2.768 Kg/Mtr)



Secondary Aluminium  
Beam (S150) Heavy Duty  
(Weight : 3.01 Kg/Mtr)

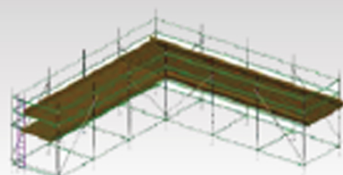


Secondary Aluminium  
Beam (S165)  
(Weight : 4.799 Kg/Mtr)

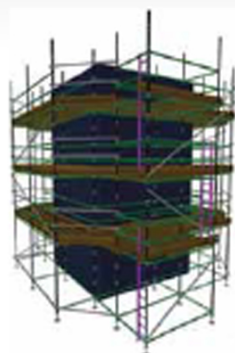


Primary Aluminium  
Beam (T150)  
(Weight : 4.774 Kg/Mtr)

# Different applications of scaffolding



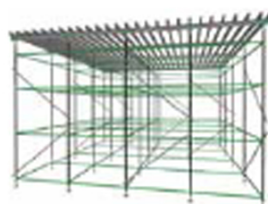
Independent Access Scaffolding



Birdcage Access Scaffolding



Mobile Tower Scaffolding



Slab/Beam Support with Aluminum Beams

## LOCATION MAP

### OFFICE & WAREHOUSE - JUAYMAH

